

TEAM LOSI SET UP SHEET EIGHT

Name: R/C Car Magazine / Drake & Amezcua

Date: October 2006 Event:

City: Hemet State: CA

Track: The Dirt Racepark @ Hemet

Track Conditions: Indoor Tight Smooth Hard Packed Blue Groove Wet Low Bite High Bite
 Outdoor Open Rough Loose/Loamy Dry Dusty Med Bite Other _____

Front Suspension

Toe: +2

Ride Height: 27mm

Camber: -1

Caster: 20

Sway Bar: 2.3

Piston/Oil: #54 / 40wt Losi

Spring: Silver

Limiters/Droop: Use droop screw to adjust shock length.

Overall Shock Length: 97mm

Steering Ackerman: Long

Bump Steer: Down

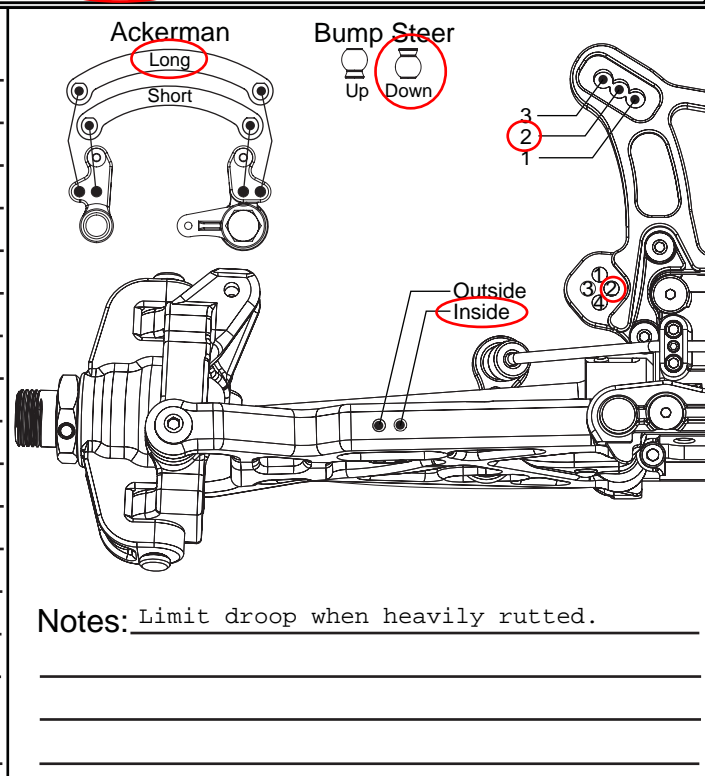
Camber Link: #2

Shock Location: #2 / Inside

Front Diff Fluid: 5000

Receiver Battery Type: _____

Center Diff Fluid: 7000



Rear Suspension

Toe: 3-deg.

Anti-Squat: 3-deg.

Ride Height: 29mm

Camber: -2

Rear Hub Spacing: Back

Sway Bar: 2.3mm

Piston/Oil: #55 / 35wt Losi

Spring: Green

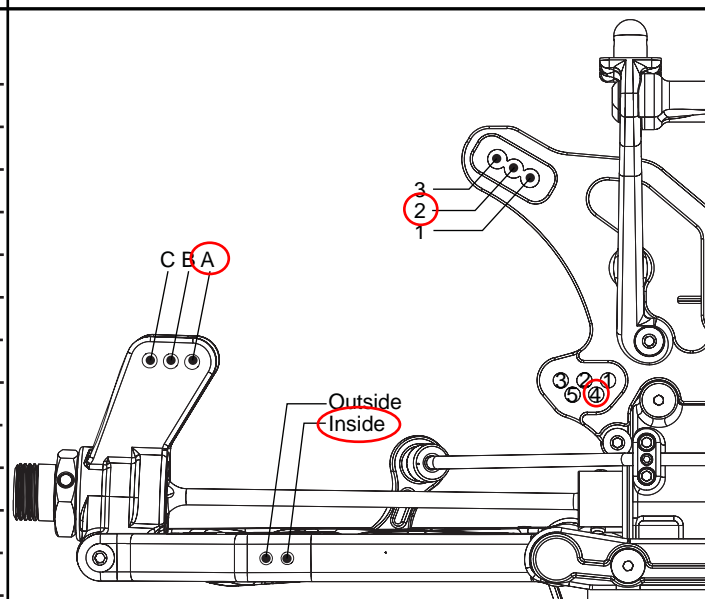
Limiters/Droop: Use droop screw to adjust shock length.

Overall Shock Length: 106mm

Camber Link: #4 / A

Shock Location: #2 / Inside on arm

Rear Diff Fluid: 2000



Engine

Engine: _____ Fuel: _____

Glow Plug: _____ Head Clearance: _____

Pipe/Header: _____ Gearing: _____

Clutch

Clutch Shoes and Springs Info

Tires

Type	Compound	Insert
Front: _____	_____	_____
Rear: _____	_____	_____

Notes: Rough track/loamy set up.