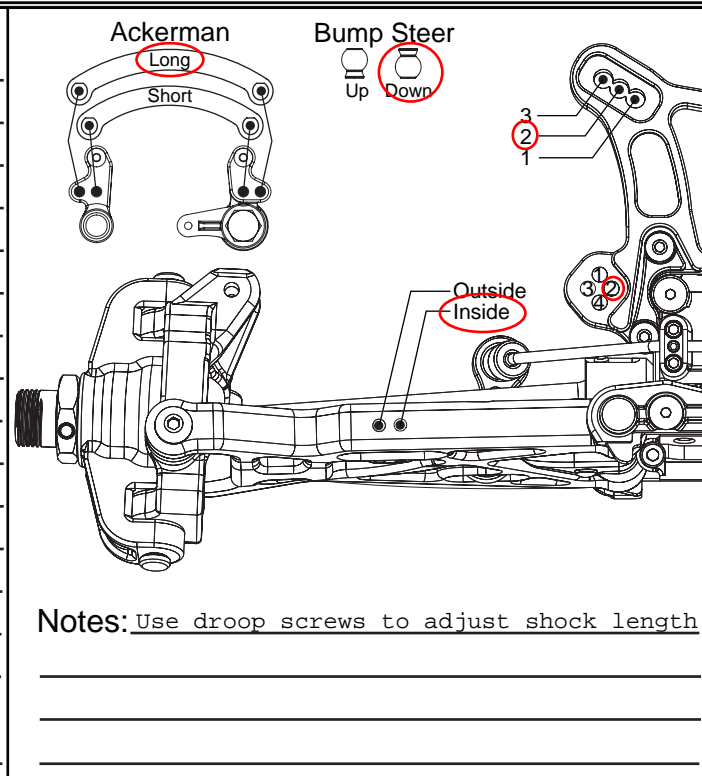


TELOS SET UP SHEET EIGHT

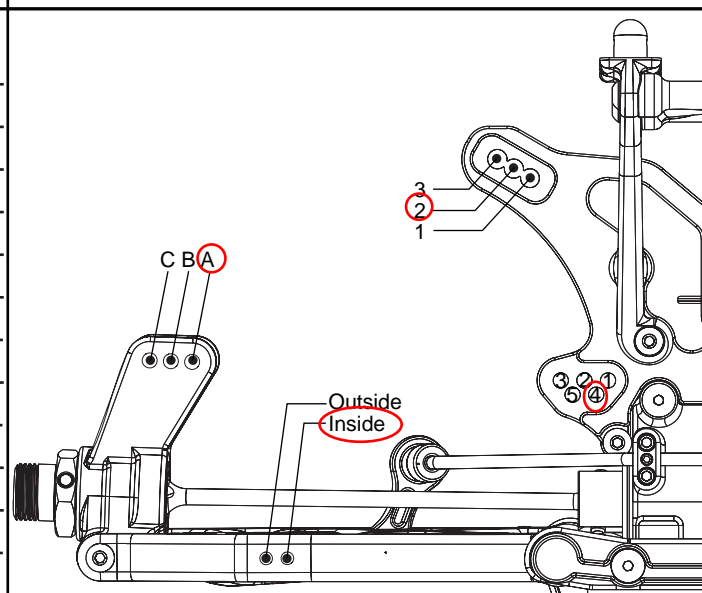
Name: R/C Car Magazine Date: October, 2006 Event: _____
 City: _____ State: _____ Track: Sun Valley Speedway Set-Up

Track Conditions: Indoor Tight Smooth Hard Packed Blue Groove Wet Low Bite High Bite
 Outdoor Open Rough Loose/Loamy Dry Dusty Med Bite Other _____

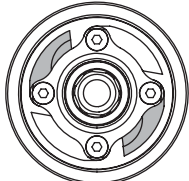
Front Suspension
 Toe: +2
 Ride Height: 27mm
 Camber: -1
 Caster: 20-deg.
 Sway Bar: 2.3mm
 Piston/Oil: #54 piston / 40wt Losi oil
 Spring: Silver
 Limiter/Droop: n/a
 Overall Shock Length: 97mm
 Steering Ackerman: Long
 Bump Steer: Down
 Camber Link: #2 position
 Shock Location: #2 tower / Inside on arm
 Front Diff Fluid: 5000 wt.
 Receiver Battery Type: --
 Center Diff Fluid: 7000 wt.



Rear Suspension
 Toe: 3-deg
 Anti-Squat: 3-deg
 Ride Height: 29mm
 Camber: -2 deg.
 Rear Hub Spacing: Back
 Sway Bar: 2.5mm
 Piston/Oil: #55 piston / 35 wt Losi oil
 Spring: Green
 Limiter/Droop: --
 Overall Shock Length: 106mm
 Camber Link: #4 tower / A on hub
 Shock Location: #2 tower / Inside on arm
 Rear Diff Fluid: 2000 wt



Engine
 Engine: _____ Fuel: _____
 Glow Plug: _____ Head Clearance: _____
 Pipe/Header: _____ Gearing: _____

Clutch **Clutch Shoes and Springs Info**

 2 aluminum & 2 carbon

Tires

Type	Compound	Insert
Front: _____	_____	_____
Rear: _____	_____	_____

Notes: Total shock length = shock at full downtravel, from center of top cap to center lower rod end.

Drake: When track tries, try limiting rear travel or lower ride height or thicker sway bars (f/r).